

CaryPact

A decentralized supercomputing protocol based on the BOT Chain and physical computing power

Mortgage BOT public chain and entity computing power decentralized supercomputing protocol



Public Blockchains Are the Value Pinnacle of the Crypto World

- Every 100x and 1000x legend is born from a public-chain ecosystem.
- ETH, SOL, BNB — all value expansion originates from their ecosystems.
- Public chains are the source of value: The larger the ecosystem, the greater the value.

Investing in a Public Chain \approx Investing in a Nation's Core Infrastructure

The value of all great projects originates from Public Blockchains

ETH

From
\$0.3 → \$4,956
16520x

SOL

From private sale
\$0.22 → \$295
1304x

BNB

From
\$0.15 → \$1375
9166x

Public chains are the national-level foundation of an ecosystem once the ecosystem takes off, value scales exponentially.

The world's first application chain built specifically for “protocols” — BOT Chain

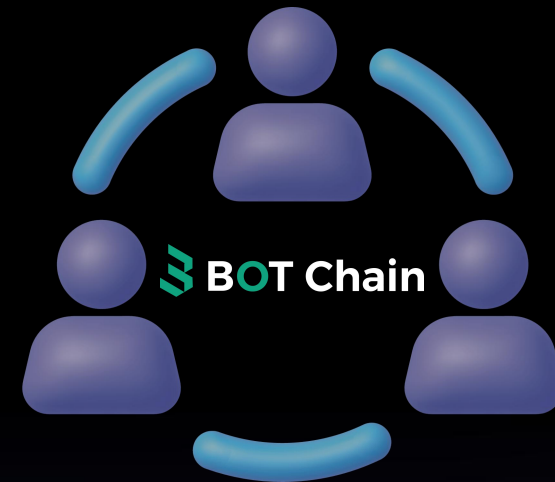
BOT Chain is a next-generation Layer-0 infrastructure designed for the Web3 and AI era, purpose-built to support large-scale protocol development and deployment.

Core Mission:

Provide global developers and project teams with standardized, modular, and reusable protocol infrastructure to dramatically reduce development cost, complexity and time-to-launch.

Unlike traditional smart contract platforms:

BOT Chain's strategic positioning is clear: it is built for protocols, providing foundational capabilities for the entire ecosystem rather than serving as a single-asset issuance chain.



The birth of BOT Chain aims to address this industry pain point:

Enable every team and developer to quickly launch projects through modular protocols, truly lowering the barrier for Web3 × AI protocol development.

The world's first application-focused public blockchain built specifically for “protocols” - BOT Chain

BOT Chain is a protocol-focused public blockchain designed for the future of Web3 and the AL era.

Native Token: BOT

Total Supply: 150 million

Initial Listing Price: \$5 ~ \$12

BOT Token Distribution Model:

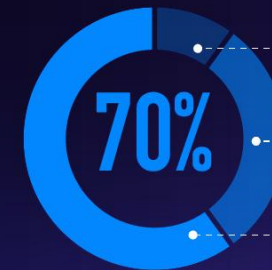
70% | Mining Output

5% | Institutional Investors

13% | Ecosystem Development

5% | Exchange Airdrop

7% | Operations & Tech Team



10% | Home Mining Machines

30% | Dedicated Mining Machines

60% | PoS Mining

Technical Research Lab Overview

BOT Chain Research Lab | Quantum-Structured Blockchain Innovation
The Technical Core Behind Structured Blockchain Innovation

The BOT Research Lab is jointly established by senior blockchain infrastructure engineers from former TRON and Tencent's blockchain engineering team, together with experts in distributed systems and cloud-native architecture. Its members have participated in the development of high-performance public blockchains, financial-grade consortium chains, and cross-chain interoperability frameworks.

The Lab focuses on constructing the next-generation structured blockchain infrastructure layer designed for the era of AI × Web3 × decentralized compute, enabling large-scale collaboration and global computational liquidity.

Laboratory Mission

To build a transparent, verifiable, collaborative, and scalable structured blockchain base layer for the global compute network.

**BOT Research Lab will become the technological engine
powering the future of AI × Web3 × decentralized compute economies.**



Foundation Introduction



NIX Foundation **Sweden's National-Level Technology Foundation**

The BOT Chain is supported by a USD 10 million strategic investment and long-term development grant from the NIX Foundation, a leading European institution dedicated to advancing decentralized infrastructure, verifiable computing, and structured blockchain technology. NIX Foundation is recognized as one of the most influential Web3 innovation supporters in Europe.

Alpha Capital **A Leading Investment Fund in Turkey**



Alpha Capital has invested USD 3 million in BOT Chain to support its ecosystem expansion and long-term development. Alpha Capital is one of the largest investment funds in Türkiye, with assets under management approaching USD 2 billion. As a professional institution integrating investment, strategic advisory, and R&D support, Alpha Capital is well known for its deep involvement from the earliest stages of projects, and for its long-term commitment to fostering innovative blockchain and technology ventures.

Gemhead Capital **Lead Investor in Multiple Binance Alpha Projects**

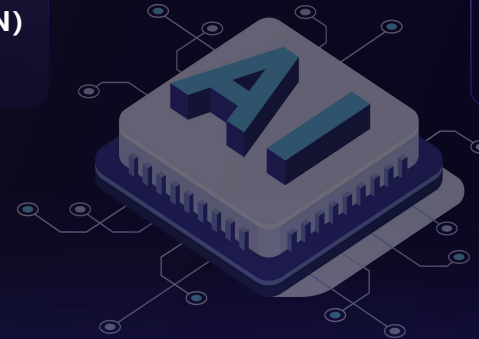


Gemhead Capital has committed a USD 2 million dedicated investment fund to BOT Chain to support the development of its ecosystem. As a top-tier global crypto investment institution, Gemhead Capital has successfully incubated multiple Binance Alpha projects and has officially joined the BOT ecosystem as a strategic capital partner. The firm will provide comprehensive capital support and strategic resources across AI, RWA, and DePIN, accelerating the growth of BOT's core ecosystem, on-chain infrastructure, and computing power network.

Supporting decentralized computing networks (DeCompute/DePIN)

Empowering next-generation Web3 protocols and computational asset ecosystems

Driving cross-border technology collaboration and industry standardization



The Foundation affirms that BOT Chain will become a foundational layer for the next generation of global compute collaboration networks and structured blockchain ecosystems.

Core Mechanism of BOT Chain

1. Modular Protocol Architecture

This is the most critical and disruptive capability of the BOT Chain. We have fully modularized all commonly used protocol functions, enabling project teams to invoke them with a single click and build protocols with zero barriers.

Native Reusable Protocol Modules Include:



DID Identity Module



NFT Module



AMM/DEX Trading Module



Lending Module



Staking/Governance Module



Data & Task Orchestration Module



AI Execution and Verification Module

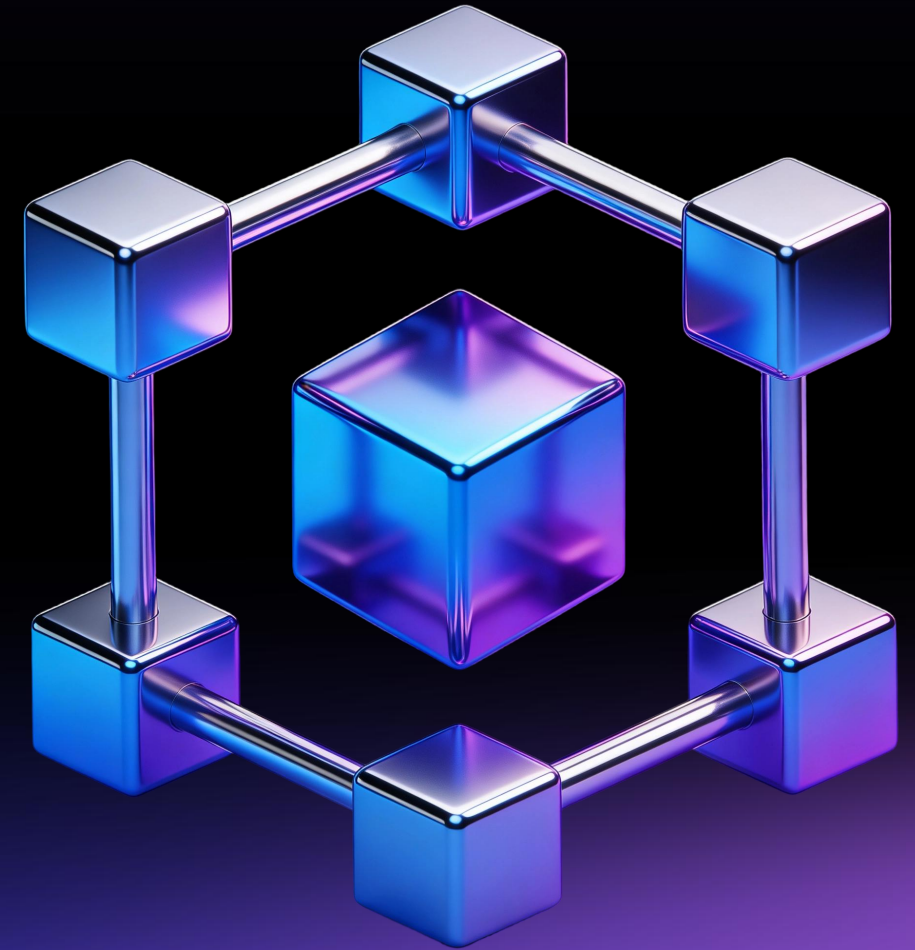


Cross-Chain and Aggregation Module



Compute-Proof Module (PoW vCompute)

Projects no longer need to build infrastructure from scratch
They can simply plug in modules and launch complete protocols instantly



Core Mechanism of BOT Chain

2. One-Click MEME Token Launch Platform

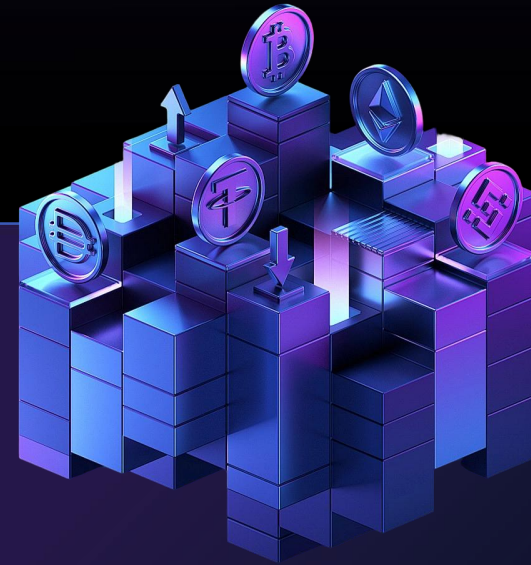
**Launch MEME tokens with
zero coding, zero barriers**

Automated security, locking, and liquidity setup

Multiple launch modes for different narratives

End-to-end support:
issuance → listing → trading

Rapidly activate market momentum
and community consensus



Through its one-click MEME launch platform, BOT Chain not only lowers the barrier to creation, but also fully standardizes security, liquidity, and market launch capabilities. This enables any creator to rapidly launch narratives on-chain, continuously driving traffic, engagement, and innovation momentum across the ecosystem.

Core Mechanism of BOT Chain

3. Hybrid DePIN Mining + PoS Mining Architecture



BOT Chain adopts a hybrid consensus model to ensure openness, decentralization, and network security.

➤ DePIN Mining | Decentralized Physical Compute Network

- Supports participation from home devices and enterprise machines
- All compute contributions are verifiable on-chain
- Reduces network centralization risks
- Designed for future AI execution tasks (Compute Verification)

➤ PoS Governance Mechanism

- Provides faster network finality
- Improves governance efficiency
- Empowers the community to participate in ecosystem decision-making
- Staking-based governance enables token holders to participate in shaping the network's direction.

DePIN Produces, PoS Governs
Together they ensure robust and reliable network finality.

Core Mechanism of BOT Chain

4. Gas Revenue Reflow: 80% Distributed to Protocol Developers

This is BOT Chain's most innovative economic model



BOT redistributes Gas generated by protocols as follows:

- 80% returned to protocol developers
Enables protocols to gain sustainable revenue and long-term operational capability.
- 20% allocated to validators, network security, and ecosystem governance
Ensures the chain's long-term stability and reliability.



This incentive structure builds a truly sustainable developer economy

- Protocols now have stable, recurring revenue
- Projects no longer rely on constant fundraising to survive

The world's first public chain that returns Gas revenue to developers On other blockchains, Gas goes to:



Miners



Validator Nodes



Foundations



Chain operators

BOT Chain Directly Distributes:

80% of Gas Revenue Back to Protocol Developers Allowing Projects to Survive and Grow

This creates three powerful network-wide effects:

Every legitimate project will choose to migrate to BOT Chain

Because BOT offers:

- Lower cost
- Faster deployment
- No need for complex development
- Gas instantly becomes revenue

Example:
If a protocol generates 10M Gas per year, the project team receives 8M.
This is a value engine unlike any other chain.

Exponential ecosystem growth (network effects × revenue explosion)

Because:

- Projects no longer rely on endless fundraising
- They operate through real protocol-generated income
- BOT Chain avoids the “dead chain” phenomenon
- The ecosystem strengthens and expands sustainably

Public-chain value grows in parallel with protocol adoption

```
graph TD; A[More protocols] --> B[More Gas]; B --> C[More transactions]; C --> D[Stronger validator network];
```

This is Protocol Economy
A self-reinforcing economic flywheel
BOT Chain is the first chain truly built for this model.

The Technical Value of a Public Blockchain: Laying the Foundation for the AI × Web3 Future

Verifiable Compute (vCompute)

AI execution tasks can be verified on-chain
Ensuring both compute power and AI outputs are provable and trustworthy.

Distributed GPU / CPU Node Network

A globally accessible compute network
Ready for future AI inference workloads.

Light Nodes + Home-Node Participation

Reduces network participation barriers
Allowing more users to contribute to network security and compute generation.

Modular Protocol 2.0 (Integrating AI Modules)

Projects can deploy AI tasks as part of the protocol layer:
Gas + AI fees → redistributed to protocol developers
This positions BOT Chain as the foundational infrastructure for future AI-native protocols.

BOT Chain Development Milestones

2024

Apr 2024

— **Project Kickoff**

- BOT Chain architecture established
- Modular protocol system initiated
- Five core infrastructures planned / initiated:
 - DEX solution design
 - Explorer prototype design
 - Wallet architecture draft
 - Cross-chain bridge interoperability model design
 - Node & DAO system initial framework

2025

Sep 2025

— **Testnet-Internal**

- DePIN + PoS hybrid consensus internal testing
- Modular Protocol v1.0 testing

Nov 2025

— **Testnet-Public**

- Global developers gain full public test access
- SDK / API released
- Core infrastructures enter public testing:
 - DEX test version launch
 - Explorer v1.0
 - Wallet public beta
 - Cross-chain bridge (ETH / BNB) testing activated
 - Node network full public test

Dec 2025

- Full-chain security audit
- Consensus layer, protocol layer, cross-chain layer comprehensive audit
- Infrastructure security audits conducted simultaneously:
 - DEX security audit
 - Cross-chain bridge security audit
 - Wallet multi-sig & private key security audit

2026

Jan 2026

— **Mainnet Launch**

- BOT Mainnet 1.0 goes live
- Modular Protocol v1.0 fully integrated
- Five core infrastructures launch on mainnet:
 - Explorer v2.0
 - Wallet (Mainnet Version)
 - DePIN / PoS Node System
 - Cross-Chain Bridge (ETH / BNB)
 - DEX Liquidity Activation

Jan20, 2026

— **CaryPact Ecosystem Launch**

- First wave of protocol applications activated
- Compute, nodes, and staking enter full participation

Mar-May 2026

- **Global Ecosystem Summit (HK / Dubai / Korea)**
- Showcase mainnet results & five major infrastructures
 - Multi-chain bridge releases
 - DEX LP gatherings
 - Multi-chain asset management officially activated

Apr 2026

— **Protocol Launchpad Goes Live**

- Drag-and-deploy protocol modules
- Plug-and-play architecture
- Ecosystem upgrades:
 - DEX Asset Free-Listing
 - Wallet Multi-Chain Entry
 - Explorer Governance Module
 - DAO Governance Rights Opened

Jun - Dec 2026

- **Listed on 10–20 top global exchanges**
- Multi-regional ecosystem expansion
- Infrastructure enters full operational mode:
 - Explorer upgraded to ecosystem hub
 - Wallet covers full cross-chain asset management
 - Bridge supports SOL / AVAX / TON
 - Node & DAO systems support global governance flows

Public Chain Expansion Plan

Dec 2025 –
Feb 2026

Global Education Rollout

- Public chain fundamentals & AI
 - Modular protocol concepts
 - Establish global awareness and technical foundation
- Build the BOT Chain global education network and ignite early market adoption.

March 2026

Global Summit 5,000 Attendees in Hong Kong

- Miner hardware showcase
 - PoW / PoS demonstrations
 - Modular protocol demonstrations
 - Major international media exposure
- Create the first wave of global public-chain momentum.

March–April
2026

One-Click Protocol Launchpad Goes Live

- Protocol ecosystem activation
 - Massive developer / project onboarding
- BOT Chain officially enters the “Protocol Economy” growth cycle.

May–June
2026

Listing on 10–20 Tier-1 Exchanges

- Begin global market expansion
 - Enter transparency & internationalization phase
- Public-chain infrastructure framework completed, enabling rapid ecosystem scaling

Public Chain × Protocol: The Fundamental Force Driving Value Resonance

BOT Chain

Five Key Value Drivers
BOT Chain Brings to CaryPact

1. Capital & Credibility Backbone
2. Secure, Scalable Technical Foundation
3. Five Built-in Infrastructures for All Users
4. Sustainable DePIN + PoS Reward Engine
5. Dual-Mining Model with Downside Protection

Five Ways BOT Chain Powers

**BOT Chain is the
“Energy Layer”
CaryPact is the
“Economic Layer”**

CaryPact

Four Growth Drivers CaryPact
Brings to BOT Chain

1. Ecosystem Entry Point:
Drives liquidity and real user activity
2. Largest Compute Provider:
Core force behind BOT DePIN + PoS engine
3. BOT Consensus Builder :
Creates strong demand and value capture
4. Global Miner Network :
Supplies real, scalable DePIN compute

Four Ways CaryPact Accelerates BOT Chain

BOT Chain Ecosystem Genesis Release

— CaryPact Protocol

BOT Chain's first ecosystem release
– CaryPact supercomputing protocol



CaryPact: Flagship Protocol at Public Chain Launch

CA Token Issuance Mechanism

Ecosystem
Token

CA

Total Supply
(tokens)

210 Million

10 million | Reserved Supply

Allocated for the progressive construction of
the BOT / CA liquidity pool

**200 million | Fully distributed through
mining mechanisms**

Mining Output Mechanism

Initial Daily Output: 40,000 CA per day
Decreases 10% every 2 years
until all 200 million CA are released

Phased Output Example

Year 1: $40,000 \times 365 = 14.6$ million

Year 2: $40,000 \times 365 = 14.6$ million

Year 3: $40,000 \times 90\% \times 365 = 13.14$ million

Year 4: $40,000 \times 90\% \times 365 = 13.14$ million

Year 5: $40,000 \times 90\% \times 90\% \times 365 = 11.826$ million

Year 6: $40,000 \times 90\% \times 90\% \times 365 = 11.826$ million

.....

Total Output Period: 22 Years

Daily Compute Output Distribution



Daily Output Example (initial 40,000 CA/day)

Passive Mining Output:	$40,000 \times 60\% \times 70\% = 16,800 \text{ CA}$
Passive PoS Output:	$40,000 \times 60\% \times 30\% = 7,200 \text{ CA}$
Active Reward Output:	$40,000 \times 37\% = 14,800 \text{ CA}$
DAO Committee Pool:	$40,000 \times 3\% = 1,200 \text{ CA}$

Daily Compute Output Distribution

- **Daily Passive Output 60%**

Passive Compute Mining Output 42%

Formula:

$$\text{Individual Daily Compute Output} = \frac{\text{Individual Compute Power}}{\text{Total Network Compute Power}} \times \text{Daily Passive Compute Output}$$

- **Minimum Investment Starting from 100 USD • No Upper Limit**

Example:

Deposited USD is automatically converted into BOT. 10% is used to buy back and burn CA. 90% is allocated to the treasury to progressively build the CA liquidity pool, supporting price stability and upward momentum.

- **Time Compensation Mechanism: Compensation Factor: 1.015^n (n = participation days)**

Computing Example (1,000 USD investment):

Day 1: Compute Power = 1,000 T Day 2: Compute Power = 1,000 × 1.015
...
Day 31: Compute Power = 1,000 × 1.015³⁰

Passive PoS Staking Output 18%

Formula:

$$\text{Individual Daily PoS Output} = \frac{\text{Individual Staked Amount}}{\text{Total Network Staked Amount}} \times \text{Daily Passive PoS Output}$$

PoS Staking Participation Rules:

- CA staking is available only after completing compute purchase
- Passive PoS rewards are capped at 1% daily; any excess rewards are automatically burned
- CA staking supports free entry and exit; redeemed CA tokens are credited within 24 hours

Sources of CA Tokens for PoS Staking Reward Pool:

1. 7,200 CA per day from PoS output, directly allocated to the PoS reward pool
2. 1.8% of CA swap sell-side slippage redirected to the PoS reward pool
3. Remaining undistributed portions from active rewards flow into the PoS reward pool

- **Daily Active Output: 37% (Distributed at 100%)**

Active Compute Output
50%

Individual Active Compute Output
= Individual Subnetwork Compute Power / Total Network Compute Power (V0 and above subnetworks) × Daily Active Compute Output

Level Rewards
50%

Level Rewards 50%

Explanation



Level-based rewards are distributed proportionally by level. Each level upgrade unlocks eligibility to receive reward shares from all lower tiers, forming a progressive incentive structure.



Level Reward Allocation (V1–V10):

The level reward pool is distributed among levels as follows: V1: 30% | V2–V6: 10% each | V7–V10: 5% each | Total: 100%

Level	V0	V1	V2	V3	V4	V5	V6	V7	V8	V9	V10
Personal Investment	≥100U	≥500U	≥1,000U	≥1,500U	≥2,000U	≥3,000U	≥4,000U	≥5,000U	≥10,000U	≥15,000U	≥20,000U
Subnetwork Performance	≥3,000U	≥10,000U	≥30,000U	≥80,000U	≥200,000U	≥500,000U	≥1,600,000U	≥5,000,000U	2×V7	2×V8	2×V9
Participate in Active Computing Output	✓	✓	✓	✓	✓	✓	✓	✓	✓	✓	✓
Participate in Level Rewards	✗	✓	✓	✓	✓	✓	✓	✓	✓	✓	✓
Participate in 3% DAO Committee Rewards	✗	✗	✗	✗	✗	✗	✗	✓	✓	✓	✓
Level Reward Share	/	30%	10%	10%	10%	10%	10%	5%	5%	5%	5%

CA Token Deposit & Withdrawal Mechanism

Deposit & Withdrawal Mechanism:

Trading Pool: BOT / CA

Minimum Entry:

Starting from 100 USDT
No Upper Limit

Capital Flow & Distribution Rules:

- A** All deposits are directly converted into BOT tokens. 10% is allocated to the liquidity pool to buy back and burn CA tokens; the remaining 90% is transferred to the treasury to progressively build the CA liquidity pool, supporting price stability and upward momentum
- B** CA Swap Slippage 5%

1.8%

Returned to the
Staking Pool

3.2%

Node
Rewards

Supercomput
eNodes

1%

Quantum
Nodes

1%

Genesis
Nodes

1.2%

CA Price Appreciation Dynamics

1. Mining output decreases by 10% every two years, reinforcing scarcity and long-term price support.
2. 10% of all deposits are used to buy back and burn CA, creating continuous deflationary pressure.
3. Level upgrades led by community leaders accelerate participation, capital inflow, and consensus expansion.
4. With free-entry staking becoming the dominant choice, buy demand structurally exceeds sell pressure.
5. BOT listings on top 20 exchanges, high public traffic, and attention boost the CA price.

BOT × CA Wealth Engine

- Token Supply (Scarcity)
- Token Price (Upward Momentum)

Five Key Advantages of CaryPact

Market Positioning: Category Leadership

- One of the most closely watched projects heading into 2026
- Positioned as a top-tier project by scale and market influence
- Rapid consensus formation with strong and sustained market attention

Structural Advantage: Dual-Engine Growth

- Public chain and protocol operating in a dual-engine synergy
- Bidirectional flow between public traffic and private communities
- Traffic and capital form a self-reinforcing positive feedback loop

Economic Model: High-Efficiency Returns

- An aggressively optimized economic model designed for early momentum
- Significant upside potential for early participants
- Clear passive and active reward structures, with fast node breakeven and high ROI

Global Footprint: Accelerated Expansion

- Active presence across 30+ countries and regions worldwide
- Coverage spanning five major language markets
- Strong foundation for rapidly scaling global consensus

Long-Term Value: Mining-Based Model

- Built on a mining-native economic framework
- Mining lifecycle extending over 22 years
- Structurally robust with strong longevity, supporting sustainable long-term returns

CA Supercomputing Protocol Node Privileges

Node Type	Price (USDT)	Total Supply (units)	Compute Power Reward	BOT Reward (Listing Price from \$5)	CA Swap Slippage Rewards	Physical Miner Reward	Node Referral Reward	DAO Committee Rights
			Feb. 2026	Feb. 2026				
Supercomputing Node	\$1,000	3000	10%	20 BOT	1.0%	/	5%	/
Quantum Node	\$5,000	500	10%	150 BOT	1.0%	1 Miner	5%	/
Genesis Node	\$10,000	300	10%	350 BOT	1.2%	2 Miners	5%	Global compute revenue share 3%

Why Are Nodes the “Highest Value-for-Money” Investment ?

Node = Rights + Compute Power + Genesis CA + BOT + Profit Share + Scarce Assets

This means:



Lowest CA acquisition cost



Maximum leverage



Future scarcity & strong competitiveness

Nodes = The earliest entry and the only chance to access the highest multiplier in the entire system

Why Must You Enter Now ?

Because we are currently at the most explosive pre-growth sweet spot of the entire chain:

- Mainnet not yet launched
- CA not yet listed
- Limited node supply
- Production difficulty at the lowest stage
- Few participants (largest share of rewards)

This is the ONLY window where ordinary users can gain future on-chain growth rights at the lowest possible cost.

The 100x and 1000x legends of ETH, SOL, and BNB all began from their very first ecosystem launches.

And CaryPact is the first ecosystem of the BOT Chain the only protocol capable of producing CA Its value foothold is even stronger than the previous three.

Early nodes are the ONLY low-cost entry to capture CA's full lifecycle rewards.

You can enter now and secure your position in the future
or wait until global consensus explodes...

and pay 10x–100x more for the same opportunity.

This is the earliest, lowest-cost, and most certain window you will ever get.

The earlier the decision, the greater the upside.



CaryPact

Returning Compute
Power to Its True
Source of Value

The world's first decentralized supercomputing aggregation protocol

